

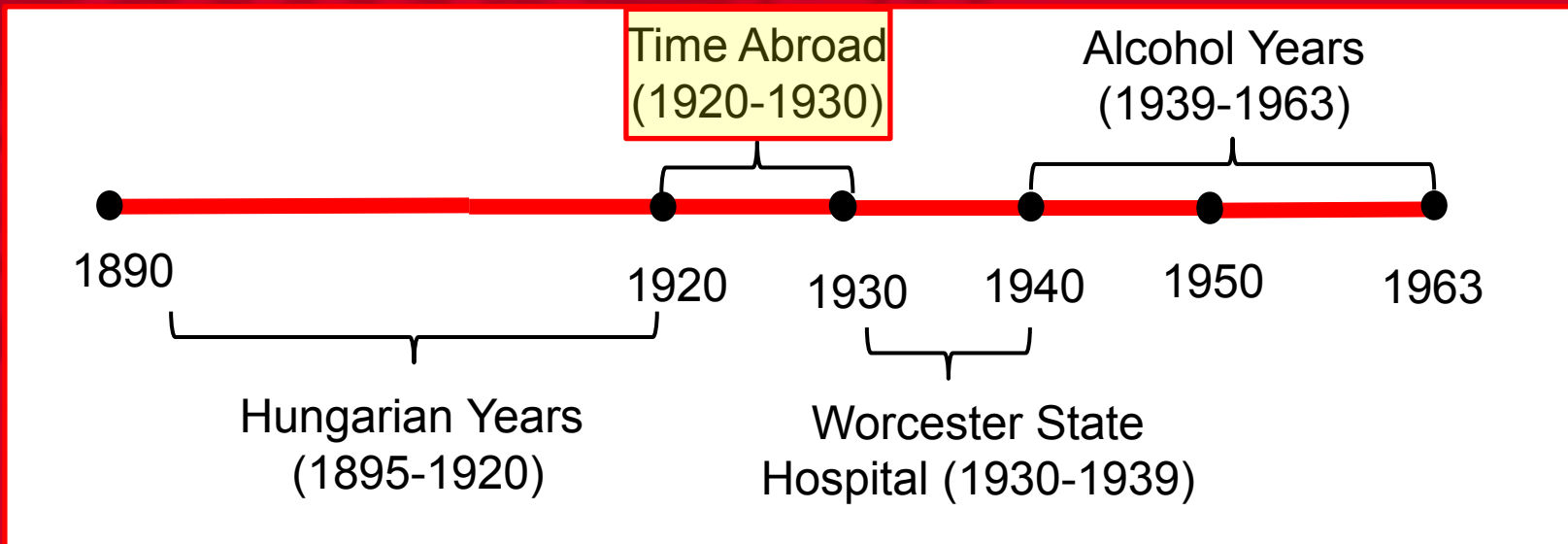


Jelinek in Central America

Scott Goldstein, MLIS

Web Librarian

Appalachian State University



Jellinek Abroad

- Where was Jellinek during the second half of the 1920s?



In Tela, Honduras!

According to Thelma Anderson and Ruth Surry, Jellinek worked as an agronomist for the **United Fruit Company in Tela**, Honduras, approximately between 1926 and 1930.



In Tela, Honduras!

According to Anderson, these are the approximate dates and positions that Jellinek occupied, but there's no way to verify this:

11/01/26	Timekeeper, agriculture, Tela, Honduras
03/01/2?	Agronomist, Tela, Honduras
03/01/29	Assistant, Research Department, Boston
06/17/30	Resignation requested

Jellinek in his own words

- But Jellinek also spoke, in 1930, of being a **coffee farmer** in South America.
- Even if he was in Honduras, is the United Fruit Company story genuine or fabricated?



A potential clue: the “banana book”

From Surry:

*While working for United Fruit **he published a book on the diseases of bananas.** To finish the book he went to Boston where United Fruit has its main office. He went to Boston as E. M. Jellinek, thus causing United Fruit great embarrassment and confusion.*

A potential clue: the “banana book”

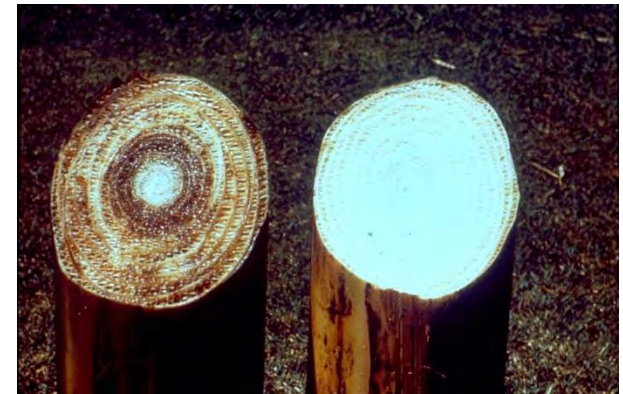
From Anderson:

*It may be well here to mention the “**banana book**.” Probably the title is known to you; it is not to me. I have seen a copy — **bound in dark green, hard cover; about 5"3~x8 in size, and approximately 3/4 inch thick**. It is possible that a copy can be obtained from the United Fruit Company.*

The United Fruit Company



- Founded in 1899
- By the late 1920s, it would enjoy near-monopolistic control over the entire banana industry
- The company maintained a laboratory in Tela, Honduras to study the fungi which carry Panama disease (Fusarium wilt)



Searching for the banana book

Initially, the search was fruitless!
No plausible leads from any author named
E. M. Jellinek or Nikita Hartmann.

BANANA BOOKS CONSULTED:

Banana cultures : agriculture, consumption, and environmental change in Honduras and the United States

The banana men : American mercenaries and entrepreneurs in Central America, 1880-1930

Bananas : how the United Fruit Company shaped the world

Jungle capitalists : a story of globalisation, greed and revolution

The business of empire : United Fruit, race, and U.S. expansion in Central America

An American company : the tragedy of United Fruit

The banana empire; a case study of economic imperialism

Empire in green and gold; the story of the American banana trade

Then, a potential breakthrough

Consulting a 1962 book on banana disease with an extensive bibliography led us to this reference:

Hartman, A. N., Kieffer, A. R., Gorman, C. F., and Harvey, F. W. (1928). Banana root studies: A preliminary report on investigations made at Tela, Honduras. *United Fruit Company Research Bulletin*, 1, 803–816.

Who was A. N. Hartman?

Limit results: Any Audience ▾ Any Content ▾ Any For

1.  [Biometrical studies of the Gros Michel banana.](#)
Author: Hartman, A. N.
Publication: Boston, Mass. United Fruit Co. 1929-1930
Document: English : Book
[Libraries Worldwide](#): 2
More Like This: [Search for versions with same title and author](#) | [Advanced options ...](#)
 [See more details for locating this item](#)
2.  [Banana growth and fruiting: a popular summary.](#)
Author: Hartman, A. N.
Publication: Boston, Mass., United Fruit Co. 1930
Document: English : Book
[Libraries Worldwide](#): 1
More Like This: [Search for versions with same title and author](#) | [Advanced options ...](#)
 [See more details for locating this item](#)
3.  [Biometrical studies of the Gros Michel banana](#)
Author: Hartman, A. N.
Publication: Boston : United Fruit Co., 1929-1930
Document: English : Book :  Microform
[Libraries Worldwide](#): 1
More Like This: [Search for versions with same title and author](#) | [Advanced options ...](#)
 [See more details for locating this item](#)

This otherwise mysterious author appears to have published in United Fruit Company journals in the second half of the 1920s.

Most publications were in research bulletins, but at least one was *popular*.

Who was A. N. Hartman?

BIOMETRICAL STUDIES OF THE GROS MICHEL BANANA

By A. N. Hartman

Bureau of Agricultural Experiments

August 28, 1929

Part I

BIOMETRICAL TECHNIQUE

BANANA GROWTH AND FRUITING
A POPULAR SUMMARY

BY

A. N. HARTMAN

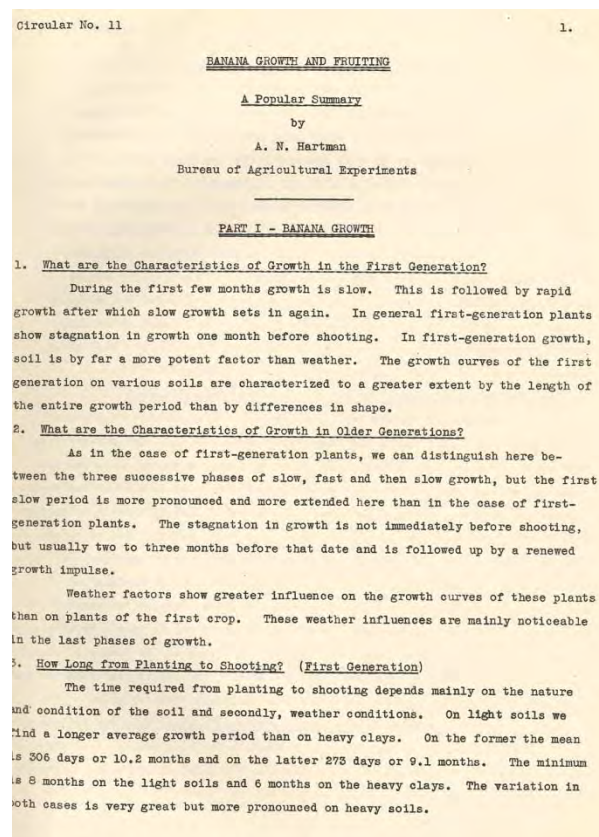
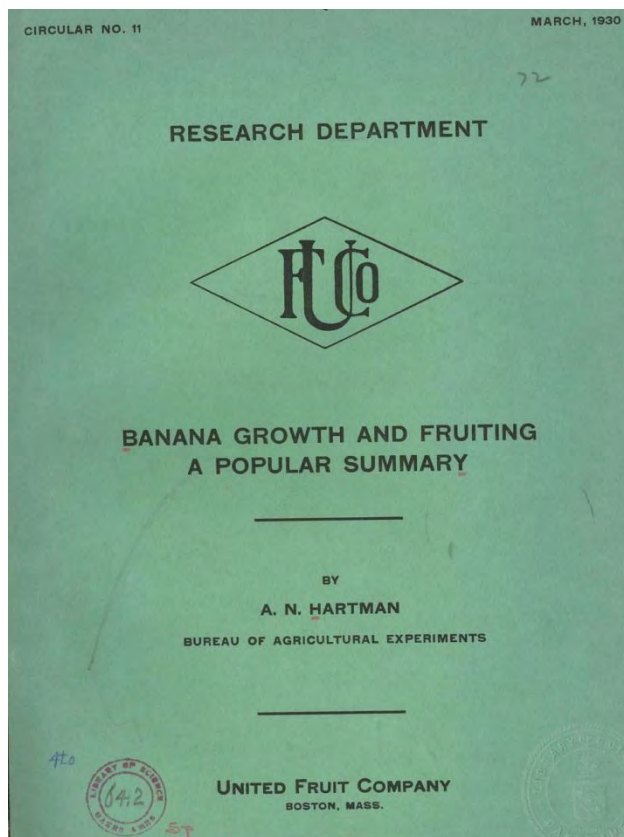
BUREAU OF AGRICULTURAL EXPERIMENTS

UNITED FRUIT COMPANY
BOSTON, MASS.



Banana Growth and Fruiting

Could this be the banana book?



What would it take to prove that A. N. Hartman is E. M. Jellinek?

- Very good circumstantial evidence
 - Right time period, right country
 - Similar abbreviation of name and possible Americanization of “Hartmann”
- Use of discourse analysis software
 - Compare Hartman and Jellinek publications for similarity in sentence structure and length, vocabulary frequency, etc.



A. N. Hartman



E. M. Jellinek

Initial impressions

Word order borrowed from Hungarian in the Popular Banana Book

- Frontal position of adverbial phrases (“**To this** we must add three months” – p.2, **In young plants** the immediate effect of the temperature is....” – p.6)
- Order of the direct and indirect object (“We have found **on a clay loan plat an average** of 20.7 months” - p.2)
- Use of definite article (“The minimum is eight months on **the** light soils and six months on **the** heavy clays” – p.1, “We find this period to be shortest on light soils” – p.2)
- Strange use of the demonstrative pronoun with –ing forms (“It has been often assumed that **this shortening** of the mother plant’s life...” p.3)

Initial impressions (cont.)

- Direct translation from Hungarian?
 - “The practical significance is that” – p.3; “We touched above the question” - p.4
- Long sentences with several subordinate and relative clauses (Hungarian style)
 - “ This unexpected result naturally does not mean that the growth period is shorter because there are more followers, but the same factor which produces many followers produces also short growth periods, or we may say that the number of followers is an indicator of the vigor of the plant” – p.3